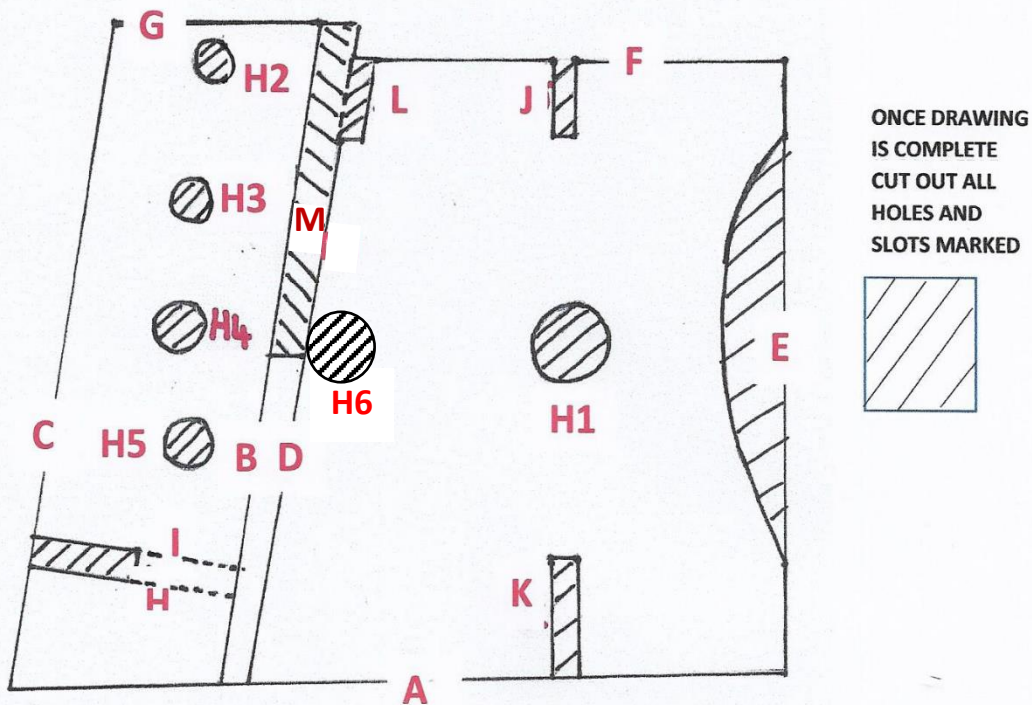


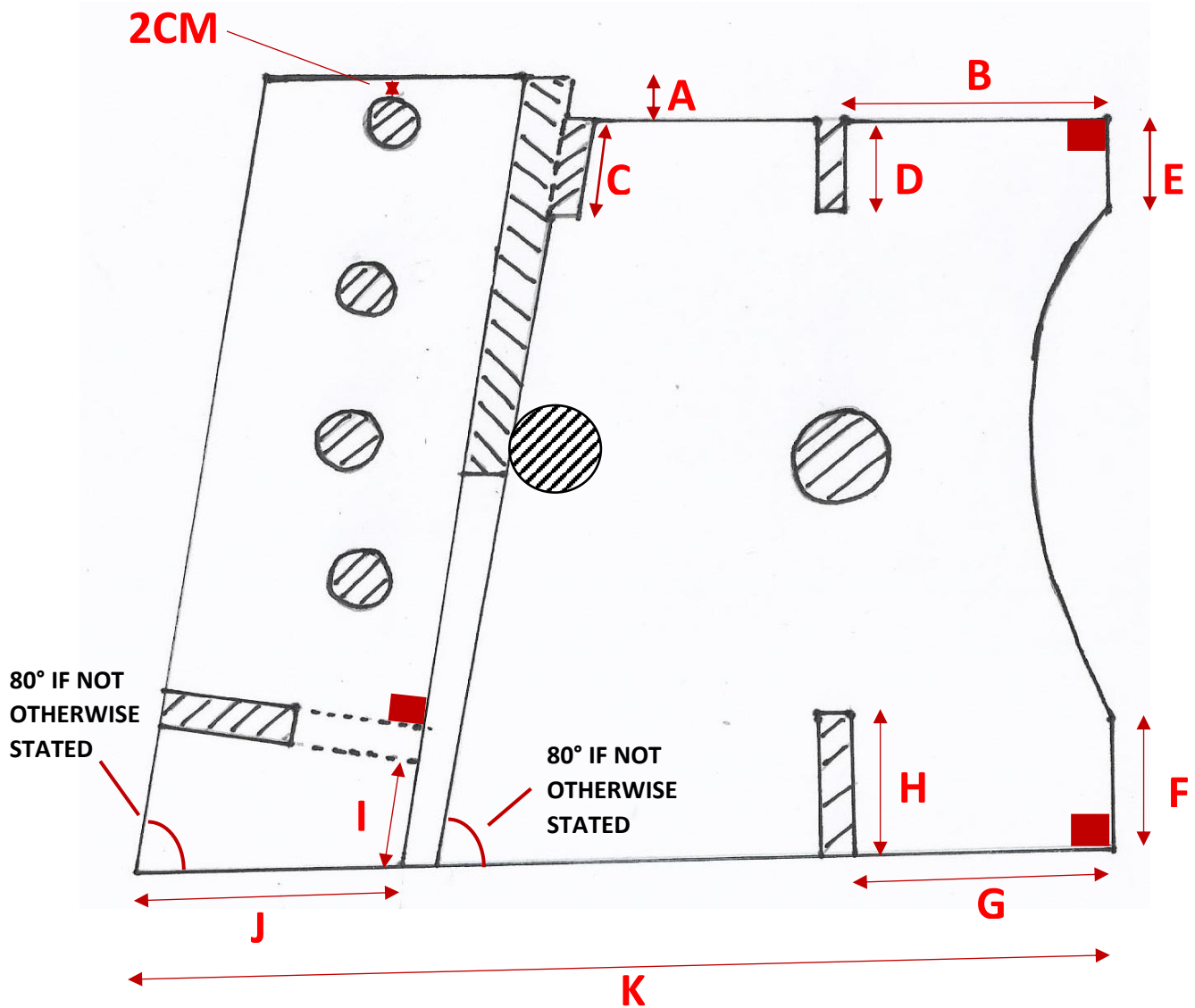
STANDING FRAME SIDE DRAWING INSTRUCTIONS



USE STANDING FRAME MEASUREMENT FORM

- A. LENGTH = 4 x DEPTH OF CHILD (MEASUREMENT 5)
 - B. **CHECK ANGLE NEEDED.** MEASURE FROM THE START OF LINE A THE DISTANCE OF DEPTH OF CHILD (MEASUREMENT 5). LENGTH = 12CM + THICKNESS OF BOARD + HEEL TO NIPPLE (MEASUREMENT 2)
 - C. SAME LENGTH AS B. SAME ANGLE AS B.
 - D. LENGTH = B MINUS 5CM. SAME ANGLE AS B.
 - E. DRAW LINE VERTICALLY FROM THE END OF A, AT A RIGHT ANGLE TO A.
 - F. DRAW LINE FROM TOP OF D TO E AT RIGHT ANGLE TO E.
 - G. DRAW LINE FROM TOP OF C TO TOP OF B
 - H. DRAW LINE 12CM UP FROM BOTTOM AT A RIGHT ANGLE FROM B TO C.
 - I. DRAW A LINE THE THICKNESS OF YOUR BOARD ABOVE H FROM B TO C.
DRAW A SLOT BETWEEN H & I HALF THE LENGTH OF H & I.
 - J. MEASURE THE DISTANCE OF MEASUREMENT 5 FROM LINE E ALONG LINE F. DRAW A SLOT 5CM LONG DOWNWARDS AND THE THICKNESS OF YOUR BOARD
 - K. MEASURE THE DISTANCE OF MEASUREMENT 5 FROM LINE E ALONG LINE A. DRAW A SLOT 10CM LONG UPWARDS AND THE THICKNESS OF YOUR BOARD
 - L. DRAW A SLOT FROM LINE F 5CM LONG DOWNWARDS AND THE THICKNESS OF YOUR BOARD AGAINST LINE D.
 - M. DRAW A SLOT BETWEEN B & D HALF THE LENGTH OF B.
- H1.** DRAW A CIRCLE FOR A ROD IN THE MIDDLE OF THE BOARD BETWEEN K & J
- H2.** DRAW A CIRCLE IN THE MIDDLE BETWEEN B & C TOP OF CIRCLE 2CM DOWN FROM LINE G.
- H3.** DRAW A CIRCLE BELOW H2 WITH THE BOTTOM OF THE CIRCLE AT MEASUREMENT 3.
- H4.** DRAW A CIRCLE BELOW H3 WITH THE TOP OF THE CIRCLE AT MEASUREMENT 4.
- H5.** DRAW A CIRCLE HALFWAY BETWEEN H4 AND LINE I, SLIGHTLY CLOSER TO LINE B THAN THE OTHER CIRCLES.
- H6.** DRAW A CIRCLE HALFWAY UP AGAINST LINE

**STANDING FRAME SIDE –
 MEASUREMENTS THAT DO
 NOT CHANGE**

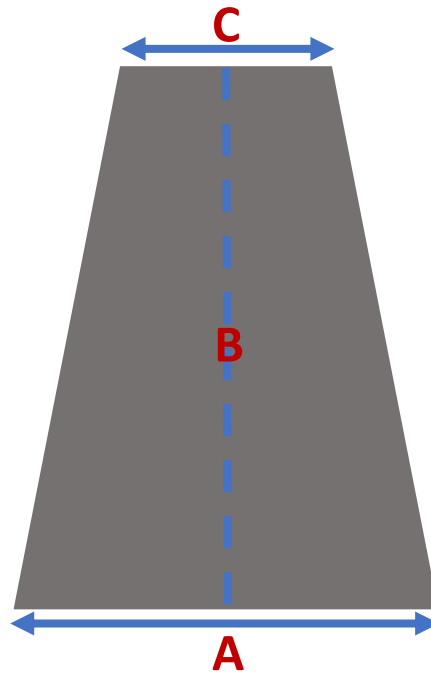


- A. 5cm
- B. DEPTH OF CHILD (MEASUREMENT 5).
- C. 5cm
- D. 5cm
- E. 10cm AT LEAST
- F. 20cm AT LEAST
- G. DEPTH OF CHILD (MEASUREMENT 5).
- H. 10cm
- I. 12cm
- J. DEPTH OF CHILD (MEASUREMENT 5).
- K. 4 X DEPTH OF CHILD (4 X MEASUREMENT 5).

■ = RIGHT ANGLE

THE WIDTH OF THE SLOTS IS ALWAYS THE SAME AS THE THICKNESS OF BOARDS BEING USED.

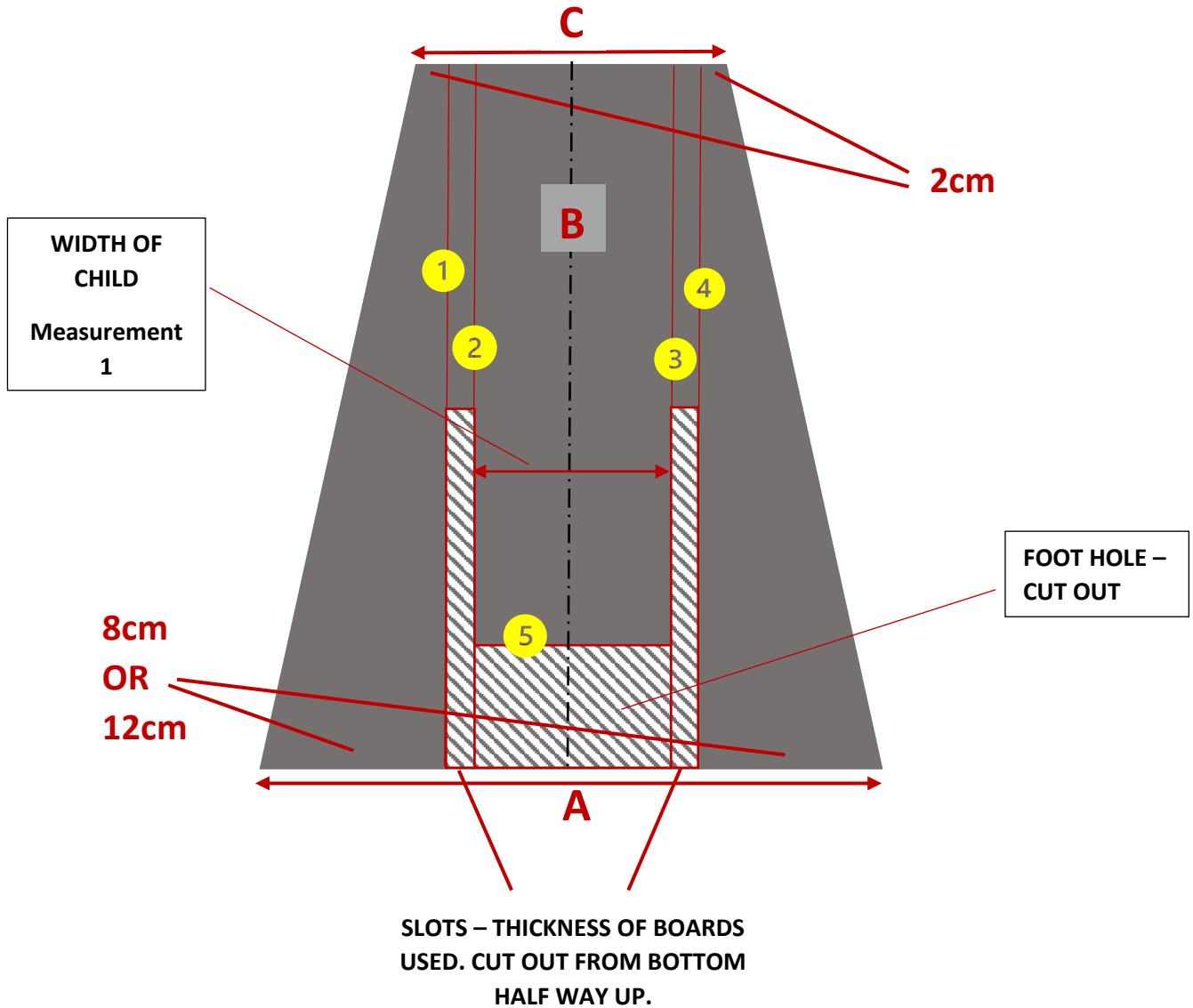
STANDING FRAME –
CENTRE BOARD



- A. DRAW A LINE THE LENGTH OF 16cm + WIDTH OF CHILD (MEASUREMENT 1) + 2x THICKNESS OF BOARD (IF THE STANDING FRAME HEIGHT IS OVER 75cm LENGTH OF LINE = 24cm + WIDTH OF CHILD (MEASUREMENT 1) + 2x THICKNESS OF BOARD)
- B. DRAW A LINE FROM THE CENTRE OF LINE A UPWARDS. LENGTH = HEEL TO NIPPLE OF CHILD (MEASUREMENT 2) + 12cm + THICKNESS OF BOARD USED.
- C. **MAKE SURE THE TOP OF LINE B IS IN THE CENTRE OF THIS LINE.** DRAW A LINE AT THE TOP OF LINE B AT A RIGHT ANGLE. LENGTH = WIDTH OF CHILD (MEASUREMENT 1) + 4cm + 2 X THICKNESS OF BOARDS USED.

DRAW A LINE FROM THE START OF LINE A UPTO THE START OF LINE C.
 DRAW A LINE FROM THE END OF LINE A UPTO THE END OF LINE C.

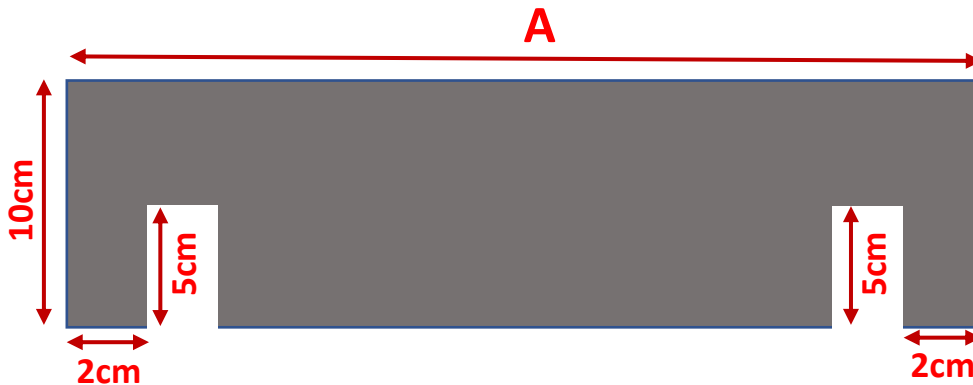
STANDING FRAME – CENTRE BOARD CUTTING



1. FROM THE START OF LINE A MEASURE 8cm (12cm IF THE STANDING FRAME HEIGHT IS OVER 75cm). DRAW A LINE AT A RIGHT ANGLE FROM LINE A TO LINE C. **(CHECK IT IS 2cm FROM THE START OF LINE C)**
2. DRAW A LINE PARALLEL TO THE RIGHT OF 1. THE THICKNESS OF BOARD APART.
3. FROM LINE 2 MEASURE ALONG LINE A THE DISTANCE OF THE WIDTH OF CHILD (MEASUREMENT 1). DRAW A LINE FROM LINE A TO LINE C.
4. DRAW A LINE PARALLEL TO THE RIGHT OF 3 THE THICKNESS OF BOARD APART. **(CHECK IT IS 8cm (12cm IF THE STANDING FRAME HEIGHT IS OVER 75cm) FROM THE END OF LINE A AND 2cm FROM THE END OF LINE C).**
5. MEASURE UPWARDS ALONG LINE 2 24cm. DRAW A LINE FROM 2 TO 3.

CUT OUT SLOTS AND FOOT HOLE.

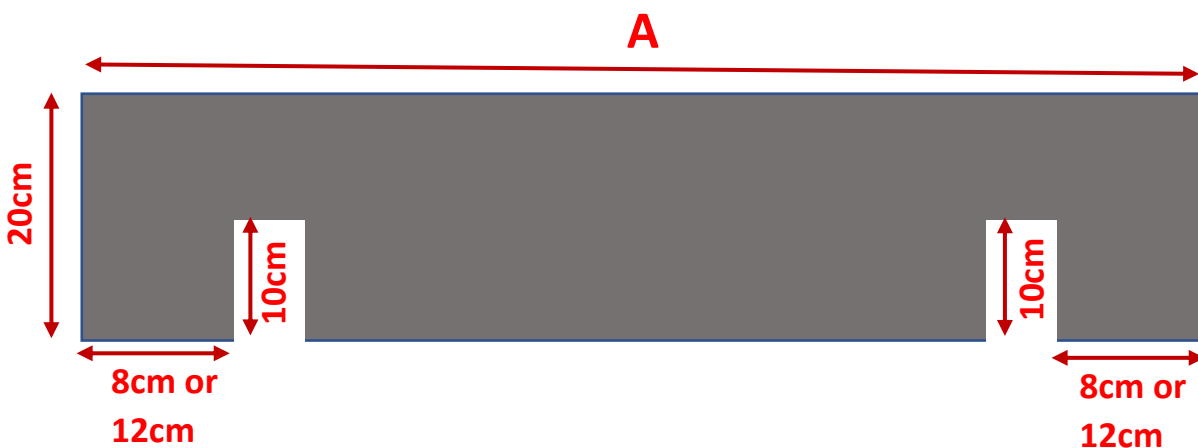
TOP SUPPORTS X 2



A. $4\text{cm} + 2 \times \text{THICKNESS OF BOARD} + \text{WIDTH OF CHILD (MEASUREMENT 1)}$

THE WIDTH OF THE SLOTS IS THE SAME AS THE THICKNESS OF THE BOARD BEING USED

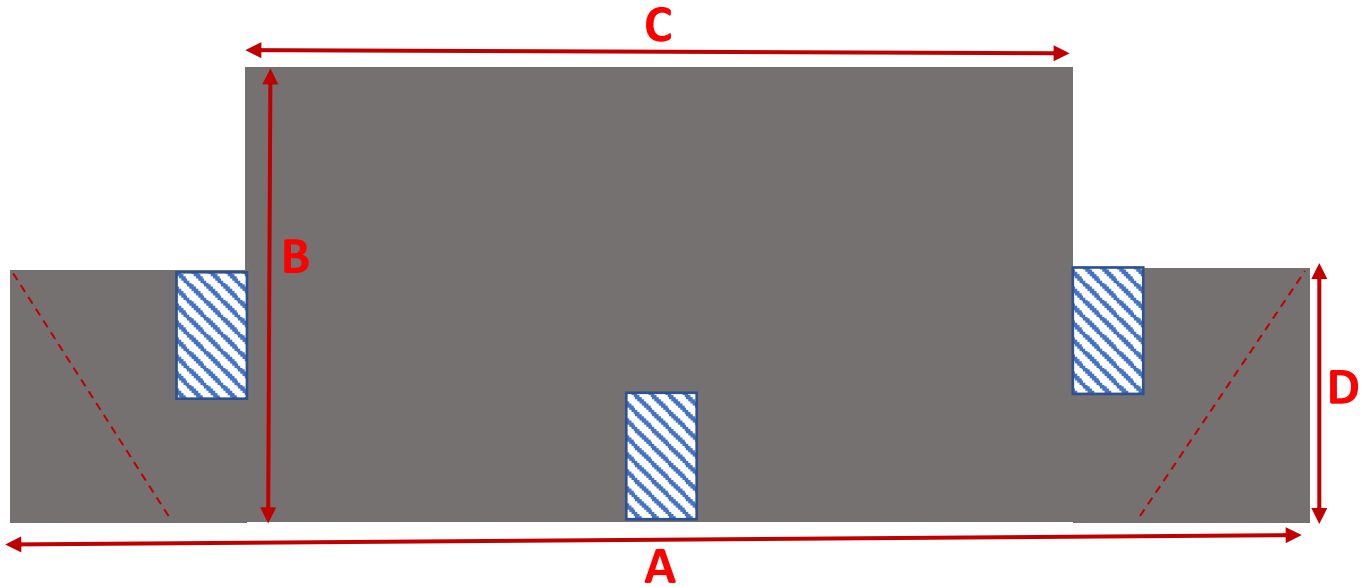
BOTTOM SUPPORT



A. $16\text{cm} + 2 \times \text{THICKNESS OF BOARD} + \text{WIDTH OF CHILD (MEASUREMENT 1)}$
 $24\text{cm (IF THE STANDING FRAME HEIGHT IS OVER 75cm)} + 2 \times \text{THICKNESS OF BOARD} + \text{WIDTH OF CHILD (MEASUREMENT 1)}$

THE WIDTH OF THE SLOTS IS THE SAME AS THE THICKNESS OF THE BOARD BEING USED

**STANDING FRAME –
 FOOTREST**



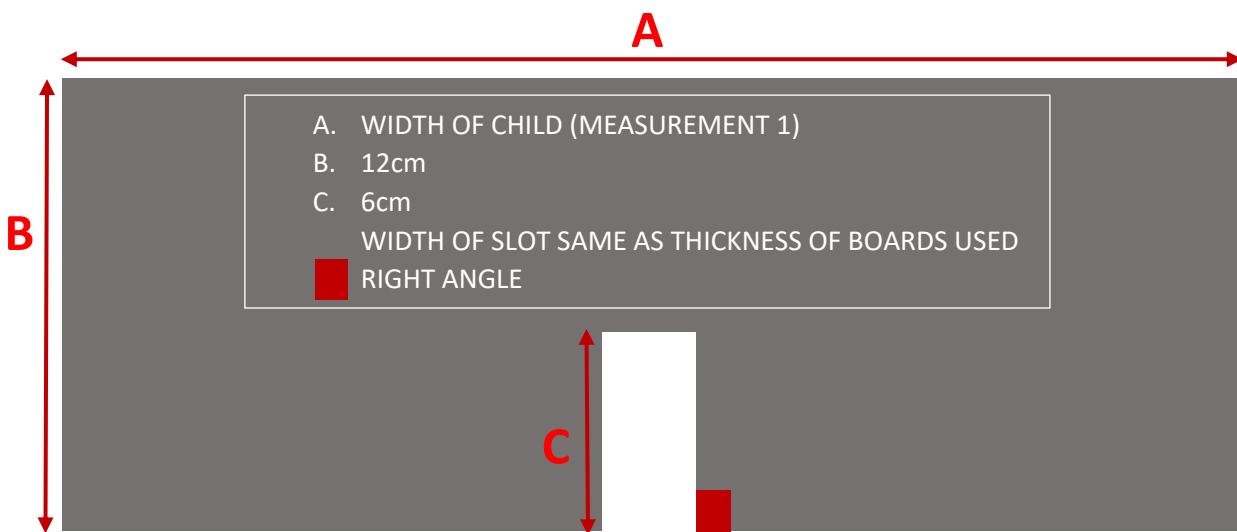
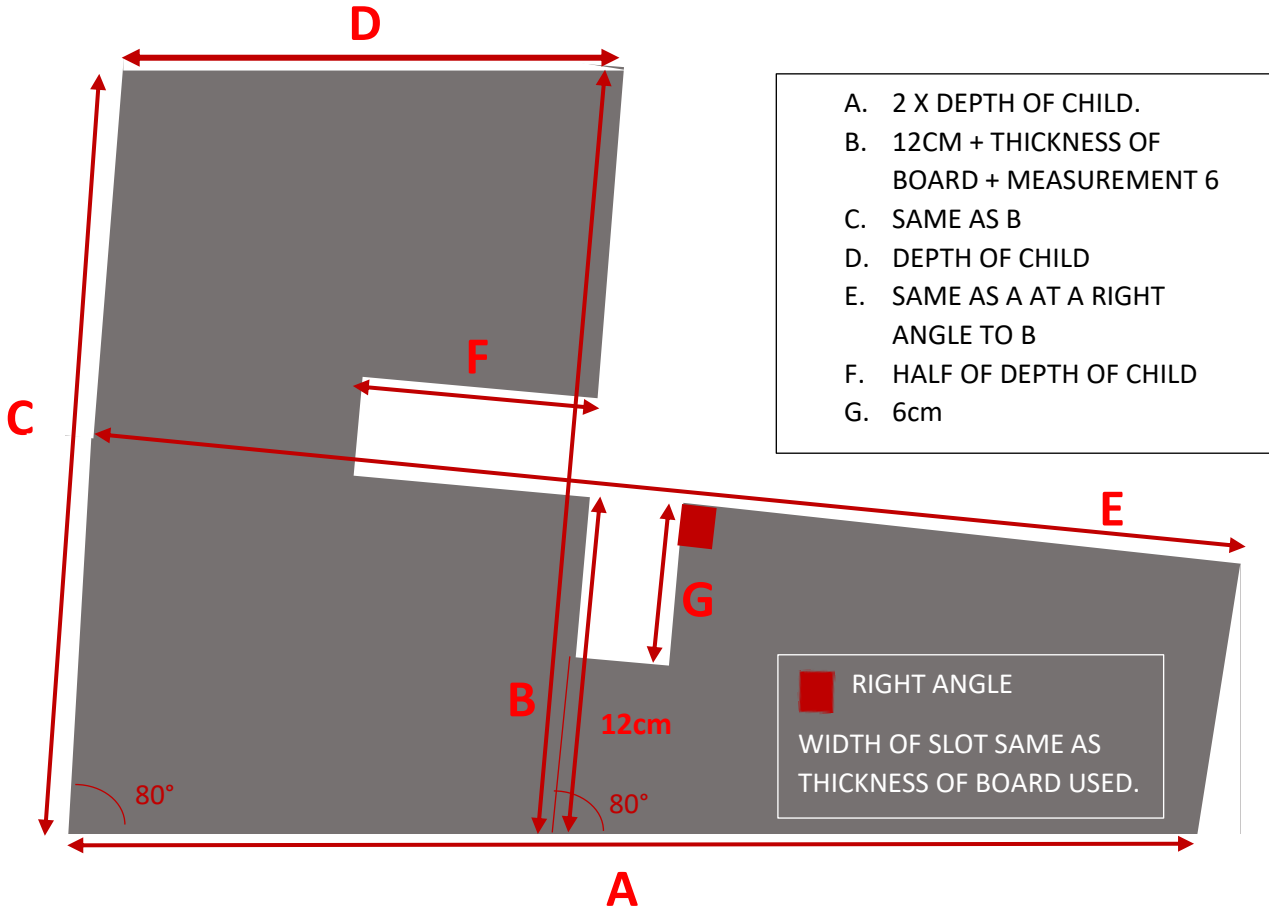
- A. 16CM + 2 X THICKNESS OF BOARD + WIDTH OF CHILD (MEASUREMENT 1)
 24cm (IF THE STANDING FRAME HEIGHT IS OVER 75cm) + 2 X THICKNESS OF BOARD + WIDTH OF CHILD (MEASUREMENT 1)
- B. 2 X DEPTH OF CHILD (MEASUREMENT 5)
- C. WIDTH OF CHILD (MEASUREMENT 1)
- D. DEPTH OF CHILD (MEASUREMENT 5)

LENGTH OF SLOTS = HALF THE DEPTH OF CHILD.

WIDTH OF SLOTS = THICKNESS OF BOARD BEING USED.

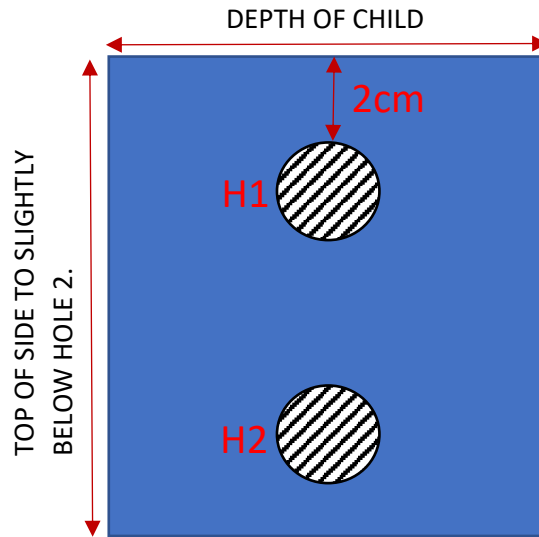
CUT ALONG DOTTED LINES ONCE IT IS PUT TOGETHER.

**STANDING FRAME –
 FOOTREST SUPPORT**





STANDING FRAME –
SIDE INSERTS X2





STANDING FRAME SIDE
WITH HEADREST

